

We Make Wi-Fi. Better.



EDGEWATER
wireless

Edgewater Wireless

TSXV: YFI OTC: KPIFF
JUNE 2025

Forward Looking Statements

Cautionary Note

This presentation contains "forward-looking" statements that involve known and unknown risks which may cause actual results to differ materially from those expressed or implied. Such statements often include terms like "anticipate," "expect," "intend," "plan," "believe," "seek," or "will." These statements reflect our current intentions based on our assessment of industry trends and market conditions.

Risk Factors

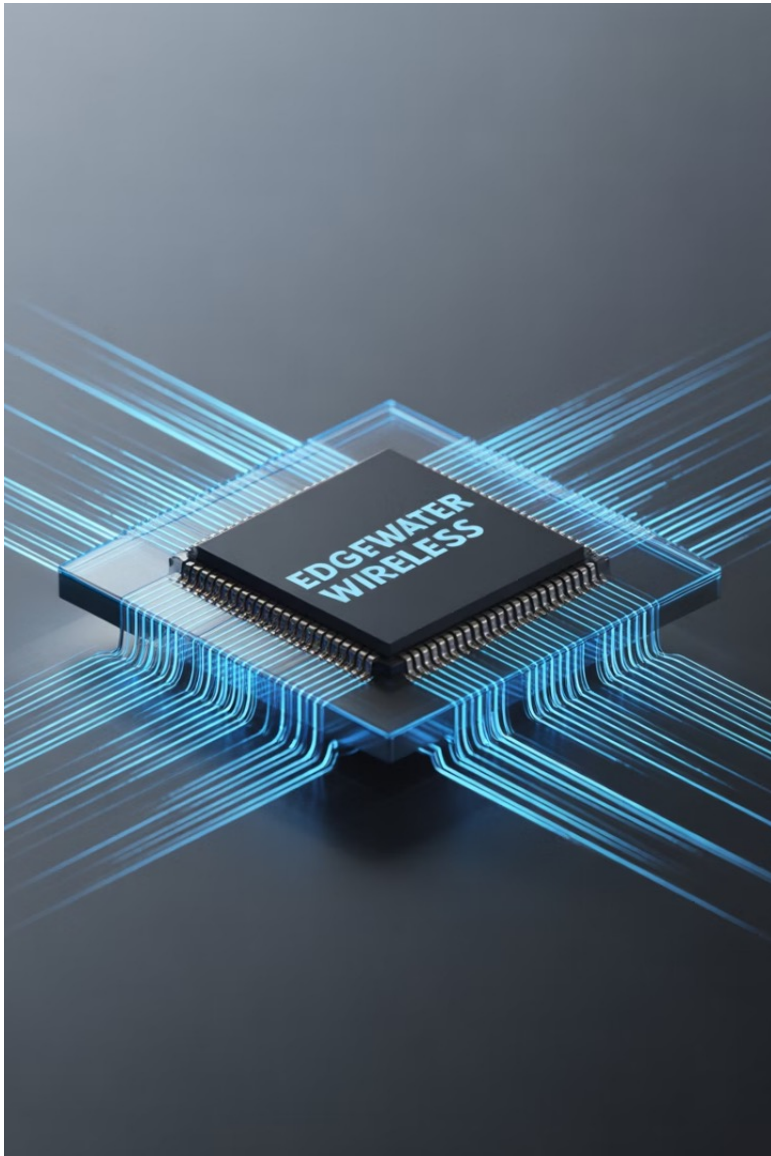
Results may differ materially due to: impacts from supply chain disruptions; our limited operating history; cash flow fluctuations; financing challenges; patent protection maintenance; increasing competition in the Wi-Fi sector; technological evolution; regulatory hurdles; and market adoption rates of new technologies. These factors could significantly affect our business performance and operations.

No Guarantee

EWSI cannot guarantee that actual results will align with these forward-looking statements. All financial projections and forecasts are based on management's reasonable assumptions but remain subject to significant uncertainties and contingencies beyond our control. Past performance should not be considered an indicator of future results.

Additional Information

Investors should review all information presented herein and refer to risk factors disclosed in our annual reports and regulatory filings. This information is current as of this presentation date and may change without notice. Edgewater Wireless is not obligated to update or revise any forward-looking statements contained in this presentation.



Edgewater Wireless

TSXV: YFI | OTC: KPIFF

Edgewater Wireless is redefining Wi-Fi from the silicon up—delivering standards-leading innovations that create strategic value for next-generation connectivity platforms and semiconductor licensing partners. With 26 granted patents and a fabless business model, Edgewater Wireless pioneered Wi-Fi Spectrum Slicing, a breakthrough technology purpose built to address the surging global demand for higher-capacity, lower-latency wireless networks. Edgewater is supercharging the economics of Wi-Fi.



Proven Innovation

26+ patents, including AI-enabled wireless optimization. 75% of homes in PoC saw up to 18x performance gains & 'beta' silicon pilot mirrored PoC results..



Global Opportunity

Targeting multi-billion dollar Wi-Fi market with disruptive innovation that solves contention & interference.



Future-Ready Technology

Spectrum Slicing™ works with ALL Wi-Fi standards, including WiFi7/8, providing scalable wireless innovation. Improves performance while compatible with existing and future infrastructure.



Strategic Partnerships

Collaborating with ARM, CableLabs, Silicon Catalyst, and CMC Microsystems. Engaged with multiple government programs & incentives.

The Problem

The world added smart devices, but Wi-Fi never evolved to handle them leaving service providers with rising costs and frustrated customers



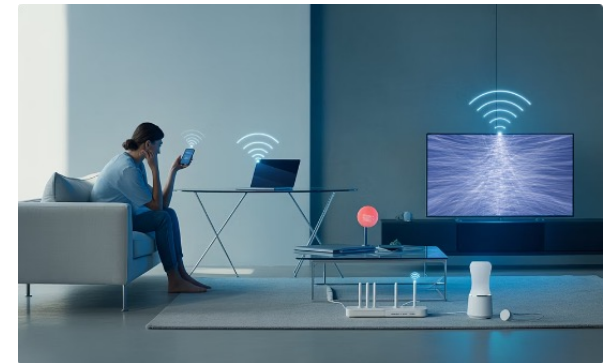
Legacy Wi-Fi is broken

Wi-Fi devices operate on a narrow single channel causing congestion and latency.



Poor user experience

75% of Service Provider customer service calls are Wi-Fi related.



Growing device demand

Average home now has 17+ Wi-Fi devices competing for bandwidth and growing.



The Multi-Lane Wi-Fi Solution

*The Most Valuable Wi-Fi Innovation That Can't Be Ignored
— And Why*



Spectrum Slicing™

Turns single-lane Wi-Fi into a multi-lane superhighway.



AI-Enabled

Dynamically configures optimal channel setup using real-time spectral awareness.



10X Performance

Maximum performance for all devices – legacy and new -- with fewer access points required.



Lower Costs

Fewer access points and less customer service requests.

Real-World Example – Liberty Global

Large-scale PoC tapped real-world residential Wi-Fi performance data for millions of devices and compared legacy, single-channel Wi-Fi architecture to Wi-Fi Spectrum Slicing

Proof of Concept

6M connected devices in **750k** households analyzed

Pilot

Deployed Edgewater reference design in independent test lab to replicate PoC environment

Results

7-18x performance gains in 75% of homes compared to legacy Wi-Fi

Results

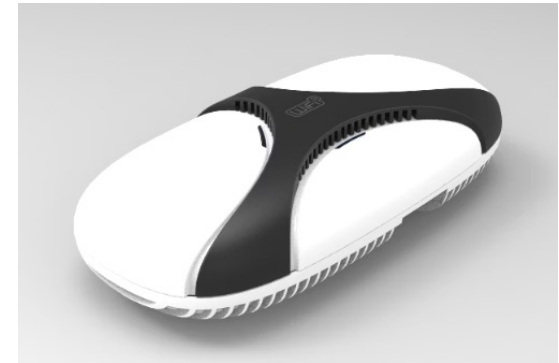
Mirrored performance gains from PoC and **delivered 50%** lower latency



Products – Silicon Solutions and Reference Designs

Engineered to deliver the highest link density in the industry, Edgewater's tri-band, multi-link WiFi7 networking platform delivers groundbreaking Wi-Fi connectivity for residential, prosumer and enterprise applications.

Proven AI-enabled core processor enables inferencing at the edge and transforms the economics of Wi-Fi.



Advanced WiFi7 features

24X24 MIMO including MU-MIMO and OFDMA



Wi-Fi Spectrum Slicing enabled

Up to 24 concurrent links/channels for future-proof scalability



Multi-flex MLO

Unlocking the marquee feature of WiFi7 to support more devices at lower latency than ever before

Massive Market Opportunity in Wi-Fi Silicon

\$30.51b

\$1b

\$1B

Target

Focused segment opportunity

3

Segments

Residential, Enterprise, Licensing

\$30.51B

Market

Total addressable Wi-Fi
semiconductor market

Commercialization Milestones

Accomplishments

- Silicon and Access Point Development
- 26 IP Patents secured plus 4 AI Patents pending
- CableLabs Partnership established
- Liberty Global PoC & 'beta' silicon Pilot

2025 (1st half)

- Complete Industrial IoT reference design
- Initiate formal product advisory program
- Kick off next-gen baseband program & package RF front ends
- Secure "Canadian Chips Act" funding



2024 (2nd half)

- Secured LOI for Industrial IoT product
- Inked Arm AFA agreement
- Joined Silicon Catalyst
- \$2M+ oversubscribed financing

2025 (2nd half)

- Ship Industrial IoT product to lead customer
- Begin system integration & RTL design
- Test new RF front ends
- Complete engineering staffing ramp

Strategic Partnerships & Government Programs

Strategic partnerships provide Edgewater with access to global ecosystems, millions in in-kind services, and accelerated time-to-market with reduced risk.



Selected for Arm's AFA program, unlocking new processor core plus verified AI/ML subsystems



Semiconductor-focused incubator giving Edgewater access to \$3M+ in development tools and services.



Advanced manufacturing hub supporting Edgewater with packaging, testing, and commercialization.



Validated Spectrum Slicing product/market fit with large-scale PoC & Pilot



Accelerated Growth Service (AGS)

Access to R&D funding, expert advisory teams, and global expansion support. Through AGS, Edgewater is positioned to benefit from an **additional \$5-7M in potential funding from NRC-IRAP, FedDev, and BDC IP**, supporting everything from reference designs and software licensing to production runs and working capital.

IP Portfolio

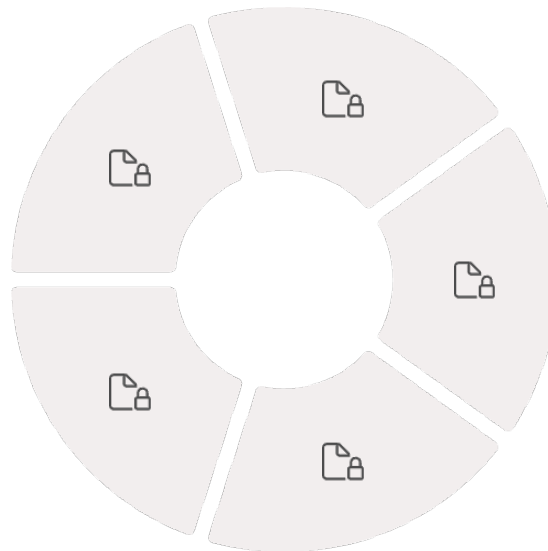
26+ Granted Patents - Covers core innovations in Wi-Fi Spectrum Slicing™ and AI-enabled radio optimization.

AI-Driven Multi-link Radio Control

Groundbreaking radio optimization capabilities

Advanced OFDM Timing and Phasing

Radio performance algorithms enabling high- performance comms



Multi-link Radio Reception

Industry-leading multi-link radio Tx and Rx functionality enabling true-MLO

Advanced DAC/ADC

Optimization for wide-band RF front end capabilities

Automated Gain Control

Essential capabilities optimizing wide-band radio performance in congested environments

North American Supply Line Ecosystem

Development and production partnerships on-shored back to North America

1

Design

Edgewater Wireless (Ottawa, Canada) - Wi-Fi Spectrum Slicing IP development

2

Manufacturing FAB

Large-scale fabrication of chips - GlobalFoundries (Vermont, USA)

3

Manufacturing Package

Packaging of chips plus Quality Assurance - IBM (Bromont, Quebec)

4

End Product

Access Points, gateways and other devices

5

Consumer

Home, business and prosumer users



Our Team

Andrew Skafel, President & CEO

Over 20 years experience working with world-class technology vendors (Newbridge, ALU & InterWAVE) plus successful start-ups (NCI sold to BvN)

Eric Smith, VP Product

Proven product innovator and business development professional who artfully blends technical and creative product strategies to drive growth (NCI sold to BvN)

Nicolas Fortineau

VP Marketing & Business Development, former Liberty Global executive.

Donovan Wallace, VP Engineering

A senior product development and engineering executive, Donovan has over 25 years experience bringing telecom and semiconductor products to market (Newbridge/Alcatel and Critical Telecom).

Brian Imrie, Board Chair

A Harvard MBA, Brian is a retired investment banker with extensive M&A experience (KPMG, National Bank, Morgan Stanley and Credit Suisse)

Ralph Garcea, Board Member

Top-ranked tech analyst and banker with more than 25 years experience in senior positions at major and boutique investment dealers and Converge (TSX: CTS) Board member

Jim Skippen, Board Member

With over 30 years of legal and management experience, Jim led WiLAN Inc. (Quarterhill Inc.), transforming it into one of the world's most successful patent monetization companies. For many years, IAM recognized Mr. Skippen as one of the world's leading Intellectual Property strategists.

Steve Andrews, Wireless Broadband Alliance

The Chair of Luminet Networks, Steve spent 25 years as an Executive at British Telecom (President of Global Carrier business and Networks) and is the former Chair of the Fixed Mobile Convergence Alliance (FMCA)

Bert Whyte, retired

The former President and CEO of Network Equipment Technologies (NET), Mr Whyte served as President and CEO of ACC (Acquired by Ericsson for ~\$300M) and held senior positions at Newbridge Networks and Mitel.

Duane Anderson, founder and CEO ECSI

Founder of military R&D company, ECSI, Duane has decades of R&D experience from silicon to RT software

Nick Keppler

Si Cat Advisor

Cap Table & Ownership Snapshot

An overview of Edgewater Wireless's current capitalization structure and key stakeholders.

Capital Structure	Quantity
Shares Issued & Outstanding	237,860,779
Warrants Outstanding*	67,837,139
Stock Options Granted	17,895,000
Convertible Debenture	5,966,667
Fully Diluted Shares	335,526,252

*Key warrant details include equity warrants at various exercise prices expiring between December 2025 and November 2029.

Ownership	Issued %	Fully Diluted %
Andrew Skafel (CEO)	2.05%	4.17%
Brian Imrie, Director	1.31%	1.96%
Ralph Garcea, Director	0.17%	0.73%
Strategic: Silicon Catalyst		5.61%

A Breakthrough Opportunity in Wi-Fi



Real-World Results

Up to 18× faster Wi-Fi performance

50% lower latency



Strong Backing

Supported by ARM, CableLabs, and Silicon Catalyst

Proven leadership team with execution track record



Validated At Scale

Tested in 750,000 homes

6 million devices evaluated



Investment Ready

The biggest Wi-Fi innovation that can't be ignored

The time to invest is now

Thank You

Ready to revolutionize Wi-Fi performance? Contact us today to learn how Edgewater Wireless can transform your connectivity experience.

1

Contact Information

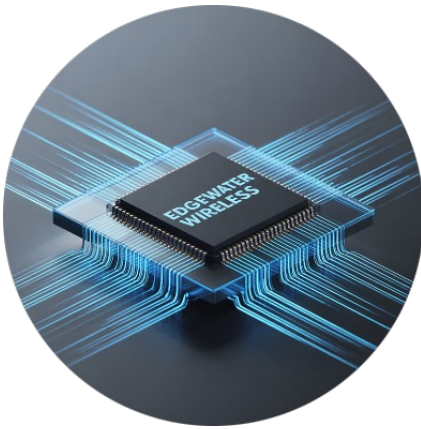
2

Andrew Skafel

CEO, Edgewater Wireless

andrews@edgewaterwireless.com

The Business Model



Silicon Solutions

Wi-Fi Spectrum Slicing silicon solutions for residential and enterprise applications.

Demonstrated traction with Service Provider & Enterprise pilots.



IP Licensing

26+ granted patents across wireless technologies with AI optimization.

First IP licensing customer: Apple.



Reference Designs Access Point Solutions

Wi-Fi Spectrum Slicing powered Access Point solutions with highly differentiated capabilities

Turn-key manufacturing for OEMs

Sample Pipeline – MLX 488 Platform Opportunity

Service Provider #1: 500k/month run-rate volume. 5 year cycle. Industrial IoT applications and Enterprise

Target Pipeline: 3+ Service Providers; 1+ Manufacturer

